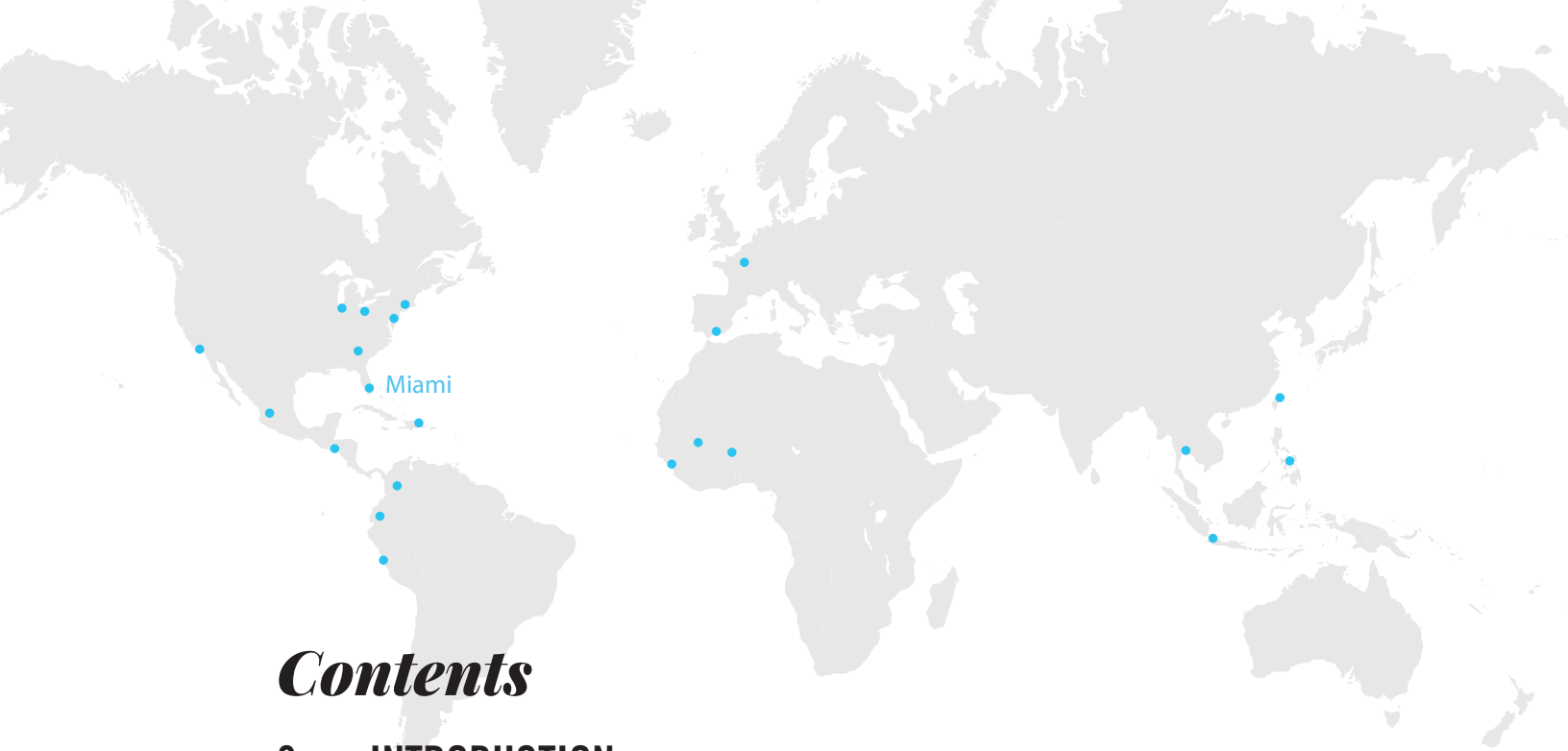




# *Miami*

ENVISION HANDBOOK





# *Contents*

## **3 INTRODUCTION**

About the site

Meet the team

## **5 GENERAL INFORMATION**

Team costs

Intern costs

Housing & food

Airport & Arrival Information

Communications

## **8 PACKING LIST**

Suggested Dress Code

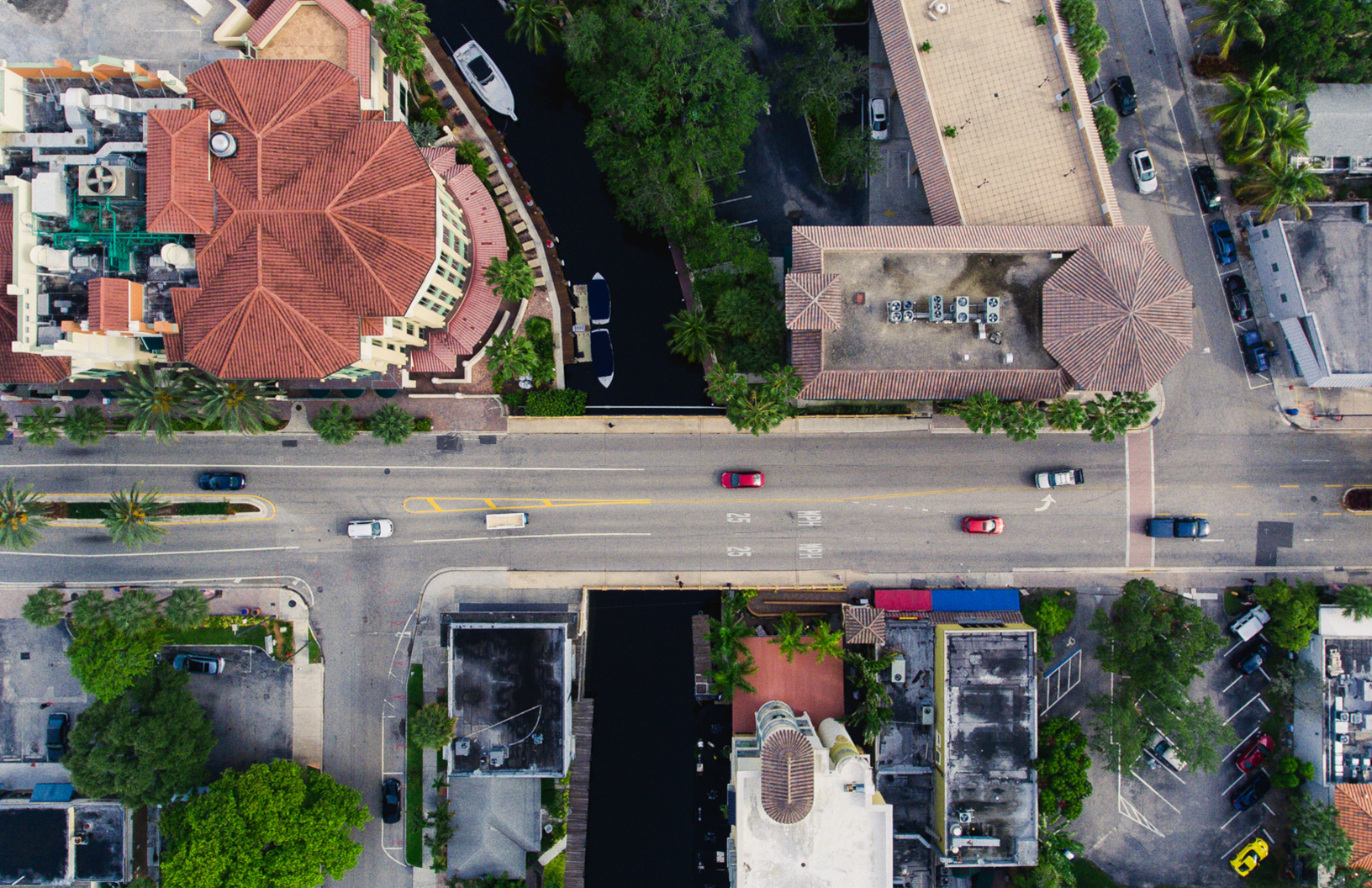
## **9 MINISTRY**

Ministry

Schedule

## **10 CULTURAL SENSITIVITY**

## **11 CONTACT INFO**



# *Introduction*

## **ABOUT THE SITE**

Envision Miami exists to make disciples who make disciples. This happens through partnerships with local Churches and other Urban Ministries, to help reach their communities for Christ. Outreach activities include prayer walks, VBS, sports ministry, partnering with local public schools, homeless ministry and the list is growing. By working outside the four walls of the church, we hope to attract people to the inside, so they can explore Christianity for themselves. As a worker in Miami you will be serving in a cross cultural-setting, possibly working with Latino, Haitian, Chinese, Jamaican, Bahamian, Arabic and North American groups to spread the Gospel. Your involvement, as a short-term mission team, is vital to success of this ministry in Miami.

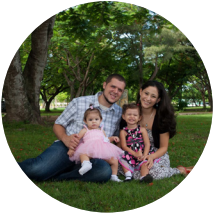
## MEET THE TEAM



**Site Coordinators** Matt and Teri have five children: Alec, Marcus, Ellah, Madelyn and Isaac. They have served as Miami Site Coordinators since 2016.

Matt and Teri were born and raised in Omaha, NE and chose to raise their family and build their lives there, until God prompted them to make a change. In April 2014, they left everything, including Matt's career as a Senior Service Engineer, to move to the DR for a 2-year ministry assignment with Envision. While there, the entire family participated in the mission. Their work included building churches, construction projects, leading thousands of children in VBS, sports camps and door to door prayer ministry. Near the end of their term, they were asked if they would lead a new Envision site in Miami. Through prayer, Matt and Teri sensed God leading them to Miami, and accepted the Site Coordinator position.

The Perrottos work alongside Alliance churches in a multi-cultural setting (Latino, Haitian, Islander, Chinese, Arabic and North American), ministering in the inner-city and surrounding areas to revive the area for Christ.



**Site Associates** Adam and Laura Atkinson have two little girls, Mimi and Jazzy. They've been married since 2011.

Adam is the definition of Jersey pride, as he was born and raised in NJ and first started his ministry there as a youth pastor. His main passion is ministering to the unchurched. He loves playing sports, along with watching his Tampa Bay Buccaneers play.

Laura loves to travel! She was born in Mexico, before moving to Colombia. At age 11 she moved to the U.S. with her mom. In Philly, she learned English and gained a passion for community projects focusing on injustice and the needy. After studying abroad in Uganda and Rwanda, Laura had her heart set on missions.

After their first year of marriage, they took a bold step and moved to the DR with Envision. Over the next five years, the DR played a huge role in their lives as they grew in their strengths, serving first as interns, then as residents. In the fall of 2018, they began their next stage of ministry as Site Associates with Envision Miami. They love ministering with their family and helping shine the light to change the communities to seek Him first!



## *General Information*

### **TEAM COSTS**

The cost is \$475 per individual of teams for 7 days. The expenses cover meals and lodging. Primary care health insurance is required for every individual that visits the site. Airfare/travel expenses are excluded.

### **INTERN COSTS**

The cost is \$1200 per intern for each month. The expenses cover meals and lodging ministry. Primary care health insurance is required for every individual that visits the site. Airfare/travel expenses are excluded.

### **HOUSING & FOOD**

Depending in the size of your team will determine where you will be housed. For smaller teams you will be housed at the Envision Miami campus where you can either bring your own sheet sets or you can rent a set from us at \$15 per person for the week. Larger groups will be put up in a local hotel

Our group trips enjoy hot and cold breakfasts, cold cut sandwiches for lunch, and each evening, a meal from a different culture that is represented in our diverse community.

When you come as an intern, you will be living with a member from the community, host family or with an on-the-ground ministry who we are partnering with. All of our interns who come to serve in the summer with Envision Miami will enjoy meals with our summer teams. If you choose to come during the fall or spring months you will be eating with the Envision team and/or your host family.



## AIRPORT & ARRIVAL INFORMATION

### Flying

If you are flying into the Miami area, you will have a choice of arriving at Miami International Airport or the Fort Lauderdale Airport. Miami is closer but both are easy to get to. Once you obtain your flight itinerary, please be sure to send it to the site coordinators so that they can arrange a pick-up.

### Driving

If you plan to drive into Miami, please use this address to navigate you on your GPS: 777 NW 106 St Miami, FL 33150. Please contact the site coordinators so they can greet you when you arrive and arrange parking for your vehicle for the duration of your time at Envision Miami.

## COMMUNICATIONS

There is no Wifi access the ministry center in Miami. As our Site grows, there are plans to add Wifi. This will be granted to trip leaders, and if need be, can be passed along to team members. We love it when our teams are fully present, whether that's actively serving or during team time back at the Light House. For this reason, we have a limited cell phone use policy during your time at Envision Miami. We understand using your phone camera to document your time here, but please refrain from spending time on social media, texting and emails throughout the week.

# ***Packing List***

- Work/ministry clothes (extra shirts as you will get sweaty and dirty each day)
- Closed toed shoes
- Church clothes (1 set)
- Comfortable/modest clothes for evenings
- Modest bathing suit (no bikini's or speedos are allowed)
- Pillow
- Bedding for a twin mattress or a sleeping bag
- Toiletries
- Towel(s) - bring two or more if you like to have a beach and shower towel
- Bible, notebook, pen
- Backpack or drawstring bag
- Money for souvenirs
- Water bottle
- Sun block
- Bug spray
- Any electronic needs (phone charger, camera...)
- Project-specific tools/resources (ask Envision Miami)
- Any necessary medications
- Team first aid kit

## **SUGGESTED DRESS CODE**

Please bring comfortable clothing for work days and hangout times during the week. Please bear in mind that you are not just representing yourself, but your home church and the ministry of Envision Miami this week. You will be interacting with populations from other cultures, who often hold higher standards of modesty than U.S. norms. With that in mind, be sure to dress modestly, avoiding too-short or too form-fitting clothes. If you are wearing something inappropriate, one of our staff members will ask you to change.



# Schedule

## TEAMS

Envision Miami will contact you in advance for details on a project/ministry and a specific schedule depending on what you are doing. In general, we try to give each team a free night/day to go into the city, catch a sporting event or try a fun restaurant, while other nights will be devotions/worship.

6:30 AM	Wake up, devotional time (led by your team), breakfast
8:00 AM	Group prayer
8:30 AM	Load up for the day
9:00 AM	Worksite/ministry site
12:00 PM	Lunch
1:00 PM	Worksite/ministry site
5:00 PM	Team Center to clean up
6:00 PM	Dinner
7:00 PM	Evening meeting
8:00 PM	Downtime
10:00 PM	Quiet hours begin
11:00 PM	Lights out

## INTERNS

Summer staff will follow a similar schedule depending on the team and projects that are scheduled for the week. Summer staff are a part of helping the Envision Team facilitate groups throughout the summer.

6-month and 1-year-long interns will be planned with the Site Coordinator and directors depending on their roles, responsibilities and ministry activities. Intentional discipleship, development, and urban ministry experience will be included in the schedule.







## *Ministry*

There are a variety of ministries that your teams may work in when coming to Miami.

For the last week of June or the first week of July only, Envision Miami partners with a CM&A Arabic church to minister to their youth while the adults partake in a conference. Many of these families are first and second generation Arabic Christians. They come together from all over Florida for a weekend of encouragement, prayer and worship. Our goal is to reach the youth give them encouragement as well as have some fun. This also enables us to partner with and support the Arabic Christian Churches in South Florida as they try to reach the more than 70,000 Muslims that live here.

**Miami Rescue Mission:** A Christian based homeless shelter that truly are the hands and feet of Jesus. We help with sorting and organizing items in their thrift store, serving food to the 1200 homeless that pass through their doors every day, along with talking with and praying for the homeless guests who come in for a hot meal off the streets (aka Homeless Ministry Time). This is a time to get to know the homeless of Miami, love them and accept them as Jesus would.

**Local church partnerships:** We partner teams with one of our local churches. Through this partnership we may host a VBS, prayer walk, community outreach or a sports camp depending on what the church needs at that time. We work with 8 churches in the area, only 3 of which have English speaking services. By partnering with the local church, this supports them and gives them a boost, which multiplies our impact on the gospel footprint of South Florida.

**English class:** We typically partner with one of our local churches to help with conversational English. In Miami, more than half the population speaks a language other than English in their homes. One of the best ways to spread the Gospel is to meet the needs of the community first and build relationships through that ministry. Helping someone learn and practice English is a great doorway into their lives, and it is our prayer that God will give us opportunities to share the Gospel through this interaction.

**Construction/work project:** Many of our partnering churches are smaller and do not have the man power or the resources to do special projects or sometimes basic maintenance on their church. With the help of our teams we can give them the extra boost they need which brings energy and encouragement to their church and helps them continue to work for the Kingdom.



## *Cultural Sensitivity*

Miami is a culturally rich metropolitan city. Within the Miami area there are over 128 different languages spoken. The majority of the families we minister to speak English as a second language and are 1st or 2nd generation immigrants to the United States. When we think about cultural sensitivity in Miami, we have to keep in mind the diverse background that our community has.

Even though you are still in the States, this will be a cross cultural experience. The people of Miami may look, speak and behave differently but always remember that they are every bit as capable and valued as your team members. We always recommend coming in with the posture of a listener and a learner. Before making assumptions, see what you can discover by observing the interactions happening around you. Take notes from our staff and their posture with the communities we serve. Avoid language that tends towards an “us-them” mentality. Your interactions have long-term ramifications for the relationships we are building here on the ground, so be thoughtful with them!



## *Contact Info*



EMAIL: [PERROTTOT@WEAREENVISION.COM](mailto:PERROTTOT@WEAREENVISION.COM)



WEBSITE: [WWW.WEAREENVISION.COM/MIAMI](http://WWW.WEAREENVISION.COM/MIAMI)